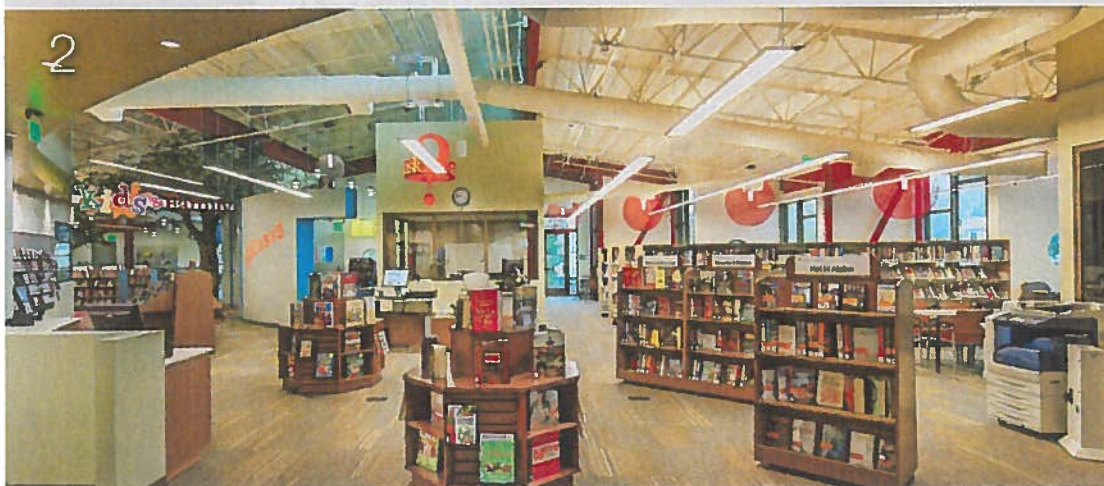
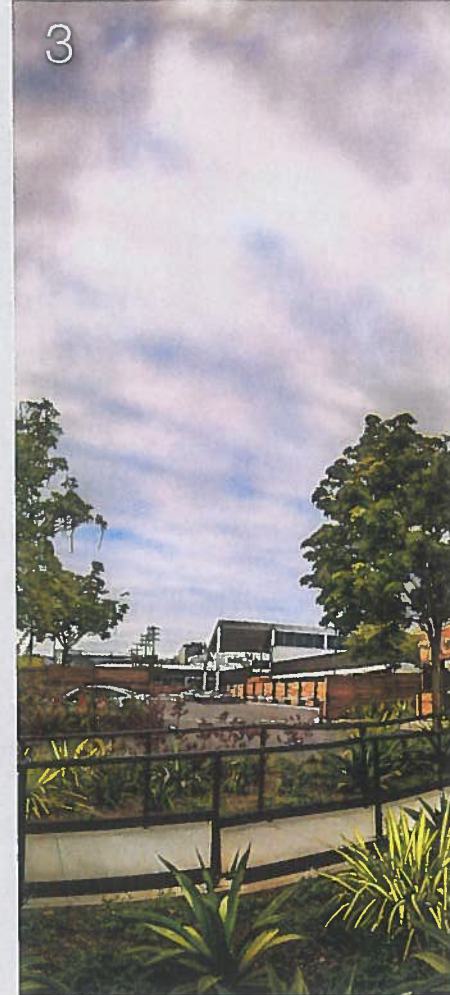


# new projects

PORTFOLIO

BY MICHAEL CHAMERNIK, ASSOCIATE EDITOR



## 1 UAB'S LIGHT-FILLED STUDENT CENTER SERVES AS CAMPUS 'LIVING ROOM'

The 159,000-sf Hill Student Center at the University of Alabama at Birmingham centralizes student services and serves as a community space for events, performances, dining, and social activities. Described as the "living room of UAB," the four-story student center features a two-story bookstore, student services area, theater, ballroom, and administrative offices—all organized around student-focused spaces intended to promote interaction between students, faculty, and staff. UAB partnered with several dining operators, including Full Moon Bar-B-Que, Mein Bowl, Starbucks, and Panera Bread. The facility includes a campus visitors center for prospective students. Hastings+Chivetta and Herrington Architects were the designers. Doster Construction was the GC on the \$35 million center.

## 2 NET-ZERO-ENERGY LIBRARY BECOMES THE HUB OF A CALIFORNIA COMMUNITY

The Alpine (Calif.) Library is the new centerpiece of this rural community of 14,000 roughly 30 miles west of San Diego. The 12,700-sf single-story building is four times larger than the old library, and provides space not only for books and computer labs, but also for community events and learning services. It will serve as a safety zone for residents during emergencies. The \$10 million facility is designed to achieve net-zero-energy consumption and attain LEED Gold certification and Living Building status. Green features include a photovoltaic roof system, sensor-controlled lighting, and variable refrigerant flow mechanical systems. On the Building Team: Ferguson Pape Baldwin Architects, Architect Manuel Oncina, Hope-Amundson Engineering (SE), ELEN Consulting (EE), Snipes-Dye (CE), and C.W. Driver (GC).